



扫二维码
关注谱尼测试



Pony Testing International Group

检测报告 Test Report

报告编号: FOC3Z7OC42232504

日期: 2020.03.13

第 1 页, 共 6 页

NO.: FOC3Z7OC42232504

Date: 2020.03.13

Page 1 of 6

委托单位: 雄县路成纸塑包装有限公司
Applicant: Xiongxian lucheng zhisu Baozhuang Co.,Ltd

委托单位提供样品信息如下:
The following sample(s) was/were submitted and identified on behalf of the client as:

样品名称: PE
Sample Name: PE

样品接收日期: 2020.03.09
Sample Received Date: 2020.03.09

样品检测日期: 2020.03.09 至 2020.03.13
Testing Period: 2020.03.09 To 2020.03.13

检测要求: RoHS 2011/65/EU 及修订指令(EU)2015/863 附录 II 的要求
Test Requested: RoHS Directive 2011/65/EU & (EU)2015/863 Annex II

检测依据: (1) IEC 62321-5 Edition 1.0:2013 的方法, 用原子吸收光谱仪测定铅的含量
Test Methods: IEC 62321-5 Edition 1.0:2013 method, Lead Analysis is performed by AAS
(2) IEC 62321-5 Edition 1.0:2013 的方法, 用原子吸收光谱仪测定镉的含量
IEC 62321-5 Edition 1.0:2013 method, Cadmium Analysis is performed by AAS
(3) IEC 62321-4:2013+AMD1:2017 的方法, 用原子荧光光谱仪测定汞的含量
IEC 62321-4:2013+AMD1:2017 method, Mercury Analysis is performed by AFS
(4) IEC 62321-7-2 Edition 1.0:2017 的方法, 用紫外可见分光光度计测定六价铬的含量
IEC 62321-7-2 Edition 1.0:2017 method, Hexavalent Chromium Analysis is performed by UV-Vis
(5) IEC 62321-6 Edition 1.0:2015 的方法, 用气相色谱质谱联用仪测定多溴联苯和多溴二苯醚的含量
IEC 62321-6 Edition 1.0:2015 method, PBBs and PBDEs Analysis is performed by GC-MS
(6) IEC 62321-8 Edition 1.0:2017 的方法, 用气相色谱质谱联用仪测定邻苯二甲酸酯类的含量
IEC 62321-8 Edition 1.0:2017 method, Phthalate Analysis is performed by GC-MS

检测结果: 请参见下页
Testing Results: Please refer to next page(s)

批准人:
Approved by: Li Qing



微信扫一扫, 使用小程序



小程序扫一扫, 在线验证

Code: 5na782nwj6



谱尼测试

Pony Testing International Group

9-5688 www.ponytest.com

公司地址: 天津滨海高新区华苑产业区 (环外) 海泰华科一路 15 号 5 幢 6、7、8、9 层
检测地址: 天津滨海高新区华苑产业区 (环外) 海泰华科一路 15 号 5 幢 6、7、8、9 层
天津滨海高新区华苑产业区 (环外) 海泰华科一路 15 号 2 幢 1 层

Beijing Lab: (010)83055000
Shanghai Lab: (021)64851999
Qingdao Lab: (0532)88706866
Shenzhen Lab: (0755)26050909
Tianjin Lab: (022)27360730
Zhangzhou Lab: (0371)69350670
Zhengzhou Lab: (0512)62997900
Changchun Lab: (0431)85150908
Dalian Lab: (0411)87336618
Haerbin Lab: (0451)88104651
Jinan Lab: (022)27360730
Zhengzhou Lab: (0371)69350670
Xinjiang Lab: (0991)6684186
Shijiazhuang Lab: (0311)85376660
Xian Lab: (029)89608785
Huhehaote Lab: (0471)3450025
Hangzhou Lab: (0571)87219096
Ningbo Lab: (0574)87736499
Wuhan Lab: (027)83997127
Hefei Lab: (0551)63843474
Guangzhou Lab: (020)89224310
Xiamen Lab: (0592)5568048
Chengdu Lab: (028)87702708



扫二维码
关注谱尼测试



Pony Testing International Group

检测报告
Test Report

报告编号: FOC3Z7OC42232504
NO.: FOC3Z7OC42232504

日期: 2020.03.13
Date: 2020.03.13

第 2 页, 共 6 页
Page 2 of 6

检测结果 (单位: mg/kg)
Test Results (Unit: mg/kg)

检测项目 Test Item	方法检出限 MDL	检测结果 Test Result	RoHS 限量 RoHS Limit
铅 Lead (Pb)	1	未检出 N.D.	1000
镉 Cadmium (Cd)	1	未检出 N.D.	100
汞 Mercury (Hg)	1	未检出 N.D.	1000
六价铬 Hexavalent Chromium (Cr ⁶⁺)	1	未检出 N.D.	1000
多溴联苯之和 Sum of PBBs	—	未检出 N.D.	1000
一溴联苯 Bromobiphenyl	5	未检出 N.D.	—
二溴联苯 Dibromobiphenyl	5	未检出 N.D.	—
三溴联苯 Tribromobiphenyl	5	未检出 N.D.	—
四溴联苯 Tetrabromobiphenyl	5	未检出 N.D.	—
五溴联苯 Pentabromobiphenyl	5	未检出 N.D.	—
六溴联苯 Hexabromobiphenyl	5	未检出 N.D.	—
七溴联苯 Heptabromobiphenyl	5	未检出 N.D.	—
八溴联苯 Octabromobiphenyl	5	未检出 N.D.	—
九溴联苯 Nonabromobiphenyl	5	未检出 N.D.	—
十溴联苯 Decabromobiphenyl	5	未检出 N.D.	—
多溴二苯醚之和 Sum of PBDEs	—	未检出 N.D.	1000
一溴二苯醚 Bromodiphenyl ether	5	未检出 N.D.	—
二溴二苯醚 Dibromodiphenyl ether	5	未检出 N.D.	—
三溴二苯醚 Tribromodiphenyl ether	5	未检出 N.D.	—
四溴二苯醚 Tetrabromodiphenyl ether	5	未检出 N.D.	—
五溴二苯醚 Pentabromodiphenyl ether	5	未检出 N.D.	—
六溴二苯醚 Hexabromodiphenyl ether	5	未检出 N.D.	—
七溴二苯醚 Heptabromodiphenyl ether	5	未检出 N.D.	—
八溴二苯醚 Octabromodiphenyl ether	5	未检出 N.D.	—
九溴二苯醚 Nonabromodiphenyl ether	5	未检出 N.D.	—
十溴二苯醚 Decabromodiphenyl ether	5	未检出 N.D.	—



谱尼测试
Pony Testing International Group

Hotline: 400-819-5688 www.ponytest.com

公司地址: 天津滨海新区华苑产业区 (环外) 海泰华科一路 15 号 5 幢 6、7、8、9 层
检测地址: 天津滨海新区华苑产业区 (环外) 海泰华科一路 15 号 5 幢 6、7、8、9 层
天津滨海新区华苑产业区 (环外) 海泰华科一路 15 号 2 幢 1 层

Beijing Lab: (010)83055000
Shanghai Lab: (021)64851999
Qingdao Lab: (0532)88706866
Shenzhen Lab: (0755)26050909
Tianjin Lab: (022)27360730
Zhengzhou Lab: (0371)69350670
Zhoukou Lab: (0512)62997900
Changchun Lab: (0431)85150908
Dalian Lab: (0411)87336618
Haerbin Lab: (0451)88104651
Xinjiang Lab: (0991)6684186
Shijiazhuang Lab: (0311)85376660
Xian Lab: (029)89608785
Huhehaote Lab: (0471)3450025
Hangzhou Lab: (0571)87219096
Ningbo Lab: (0574)87736499
Wuhan Lab: (027)83997127
Hefei Lab: (0551)63843474
Guangzhou Lab: (020)89224310
Xiamen Lab: (0592)5568048
Chengdu Lab: (028)87702708



扫二维码
关注谱尼测试



Pony Testing International Group

检测报告
Test Report

报告编号: FOC3Z7OC42232504

日期: 2020.03.13

第 3 页, 共 6 页

检测结果 (单位: mg/kg)

NO.: FOC3Z7OC42232504

Date: 2020.03.13

Page 3 of 6

Test Results (Unit: mg/kg)

检测项目 Test Item	CAS 号 CAS Number	方法检出限 MDL	检测结果 Test Result	RoHS 限量 RoHS Limit
邻苯二甲酸二(2-乙基)己酯 (DEHP)	117-81-7	50	未检出 N.D.	1000
邻苯二甲酸二丁酯 (DBP)	84-74-2	50	未检出 N.D.	1000
邻苯二甲酸丁基苄基酯 (BBP)	85-68-7	50	未检出 N.D.	1000
邻苯二甲酸二异丁酯 (DIBP)	84-69-5	50	未检出 N.D.	1000

备注: (1) “—”= 未规定

Note: “—” = Does not stipulate

(2) 未检出(<方法检出限)

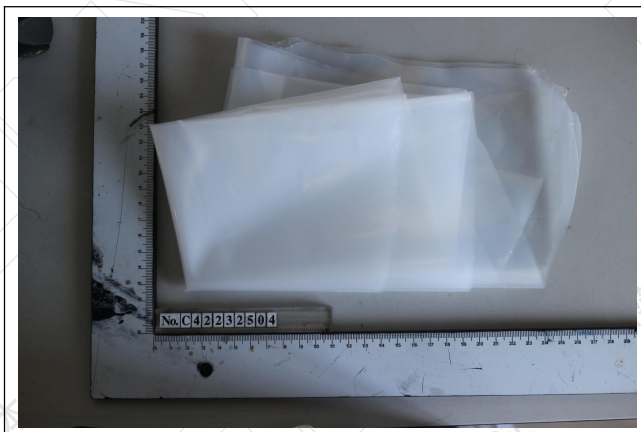
N.D. = Not Detected (<MDL)

(3) 最大允许极限值引用 RoHS 2011/65/EU 及修订指令(EU)2015/863 附录 II 的要求

The most allowable limit value reference to RoHS Directive 2011/65/EU & (EU)2015/863 Annex II

样品编号和照片:

Sample No. & Photo:



仅对报告照片中的样品负责

本页以下空白

Pony authenticate the photo on original report only

The page below is blank



Pony Testing International Group

Hotline: 400-819-5688 www.ponytest.com

公司地址: 天津滨海新区华苑产业区(环外)海泰华科一路15号5幢6、7、8、9层

检测地址: 天津滨海新区华苑产业区(环外)海泰华科一路15号5幢6、7、8、9层

天津滨海新区华苑产业区(环外)海泰华科一路15号2幢1层

Beijing Lab: (010)83055000

Shanghai Lab: (021)64851999

Qingdao Lab: (0532)88706866

Shenzhen Lab: (0755)26050909

Tianjin Lab: (022)27360730

Wuzhou Lab: (0512)62997900

Changchun Lab: (0431)85150908

Dalian Lab: (0411)87336618

Haerbin Lab: (0451)88104651

Zhengzhou Lab: (0371)69350670

Xinjiang Lab: (0991)6684186

Shijiazhuang Lab: (0311)85376660

Xian Lab: (029)89608785

Huhehaote Lab: (0471)3450025

Hangzhou Lab: (0571)87219096

Ningbo Lab: (0574)87736499

Wuhan Lab: (027)83997127

Hefei Lab: (0551)63843474

Guangzhou Lab: (020)89224310

Xiamen Lab: (0592)5568048

Chengdu Lab: (028)87702708



扫二维码
关注谱尼测试



Pony Testing International Group

检测报告 Test Report

报告编号: FOC3Z7OC42232504
NO.: FOC3Z7OC42232504

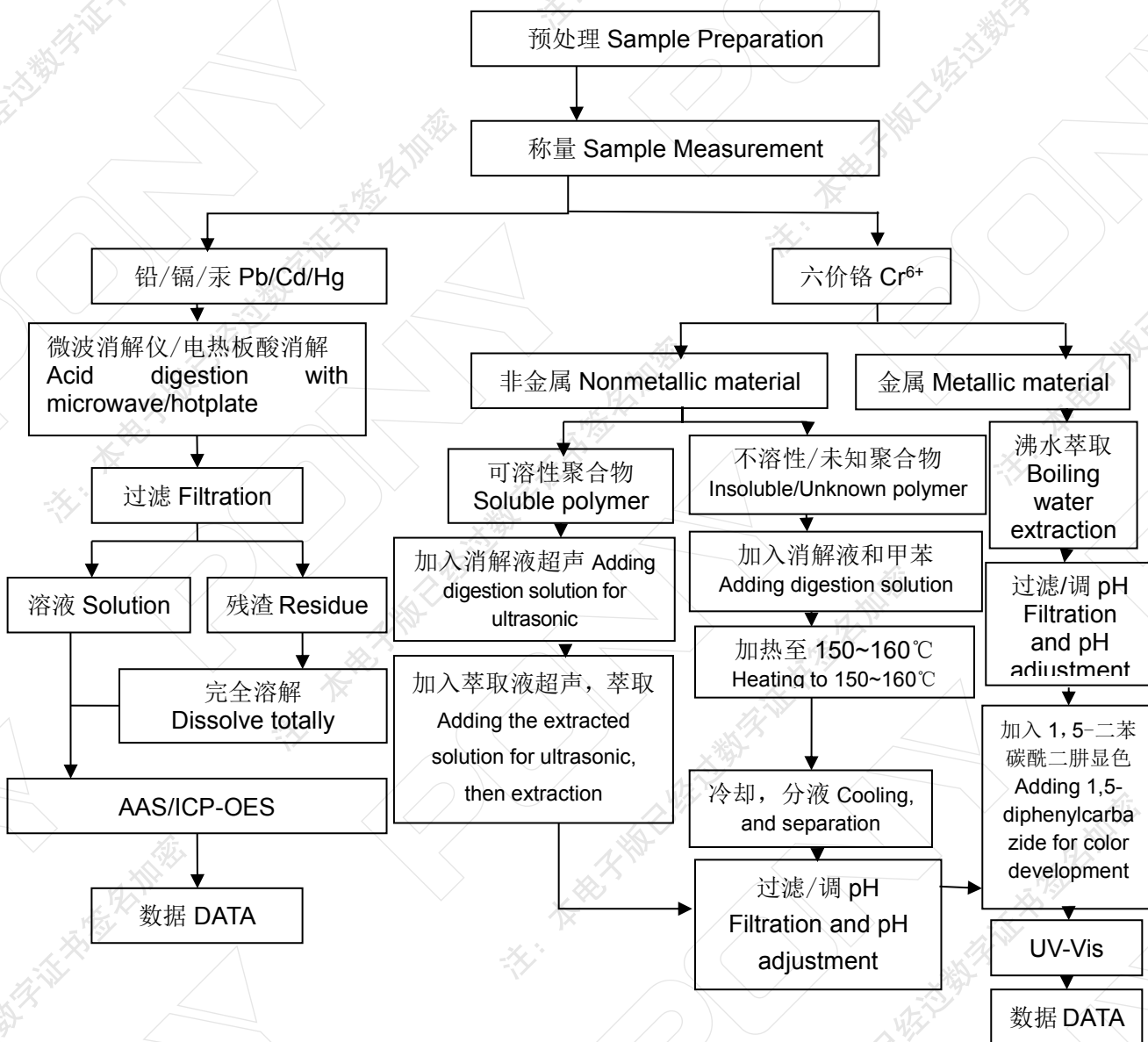
日期: 2020.03.13
Date: 2020.03.13

第 4 页, 共 6 页
Page 4 of 6

检测流程图 Measurement Flow-chart

检测人员: 杨博义 Tested by: Yang Boyi
审核人员: 李晓丽 Checked by: Li Xiaoli
实验室负责人: 李青 Person in charge of the lab: Li Qing
样品按照下述流程被完全消解 (六价铬除外)。

These Samples Were Dissolved Totally By Pre-conditioning Method According To Below Flow Chart.
(Cr⁶⁺ Test Method Excluded)



谱尼测试
Pony Testing International Group

Hotline: 400-819-5688 www.ponytest.com

公司地址: 天津滨海高新区华苑产业区 (环外) 海泰华科一路 15 号 5 幢 6、7、8、9 层
检测地址: 天津滨海高新区华苑产业区 (环外) 海泰华科一路 15 号 5 幢 6、7、8、9 层
天津滨海高新区华苑产业区 (环外) 海泰华科一路 15 号 2 幢 1 层

Beijing Lab: (010)83055000	Shanghai Lab: (021)64851999	Qingdao Lab: (0532)88706866	Shenzhen Lab: (0755)26050909	Changchun Lab: (0431)85150908	Huhehaote Lab: (0471)3450025	Wuhan Lab: (027)83997127	Hefei Lab: (0551)63843474
Xinjiang Lab: (0991)6684186	Ningbo Lab: (0574)87736499	Dalian Lab: (0411)87336618	Haerbin Lab: (0451)88104651	Xian Lab: (029)89608785	Hangzhou Lab: (0571)87219096	Guangzhou Lab: (020)89224310	Xiamen Lab: (0592)5568048
Zhengzhou Lab: (0371)69350670	Shijiazhuang Lab: (0311)85376660	Jianjin Lab: (022)27360730	Zhengzhou Lab: (0371)69350670	Xian Lab: (029)89608785	Ningbo Lab: (0574)87736499	Chengdu Lab: (028)87702708	



扫二维码
关注谱尼测试



Pony Testing International Group

检测报告 Test Report

报告编号: FOC3Z7OC42232504

日期: 2020.03.13

第 5 页, 共 6 页

NO.: FOC3Z7OC42232504

Date: 2020.03.13

Page 5 of 6

检测流程图 Measurement Flow-chart

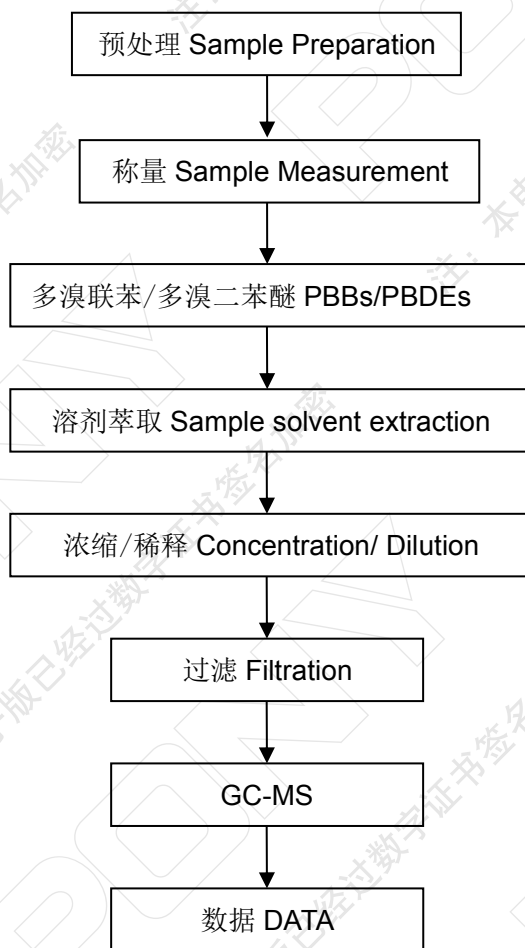
检测人员: 周国春 Tested by: Zhou Guochun

审核人员: 李晓丽 Checked by: Li Xiaoli

实验室负责人: 李青 Person in charge of the lab: Li Qing

样品按照下述流程被完全消解 (多溴联苯/多溴二苯醚除外)。

These Samples Were Dissolved Totally By Pre-conditioning Method According To Below Flow Chart.
(PBBs/PBDEs Test Method Excluded)



谱尼测试
Pony Testing International Group

Hotline: 400-819-5688 www.ponytest.com

公司地址: 天津滨海新区华苑产业区 (环外) 海泰华科一路 15 号 5 幢 6、7、8、9 层
检测地址: 天津滨海新区华苑产业区 (环外) 海泰华科一路 15 号 5 幢 6、7、8、9 层
天津滨海新区华苑产业区 (环外) 海泰华科一路 15 号 2 幢 1 层

Beijing Lab: (010)83055000	Shanghai Lab: (021)64851999	Qingdao Lab: (0532)88706866	Shenzhen Lab: (0755)26050909	Changchun Lab: (0431)85150908	Xian Lab: (029)89608785	Huhehaote Lab: (0471)3450025	Hangzhou Lab: (0571)87219096	Wuhan Lab: (027)83997127	Hefei Lab: (0551)63843474	Guangzhou Lab: (020)89224310	Xiamen Lab: (0592)5568048	Chengdu Lab: (028)87702708
Tianjin Lab: (022)27360730	Jianjin Lab: (022)27360730	Zhengzhou Lab: (0371)69350670	Luoyang Lab: (0379)62997900	Haerbin Lab: (0451)88104651	Xinjiang Lab: (0991)6684186	Ningbo Lab: (0574)87736499						



扫二维码
关注谱尼测试



Pony Testing International Group

检测报告 Test Report

报告编号: FOC3Z7OC42232504

日期: 2020.03.13

第 6 页, 共 6 页

NO.: FOC3Z7OC42232504

Date: 2020.03.13

Page 6 of 6

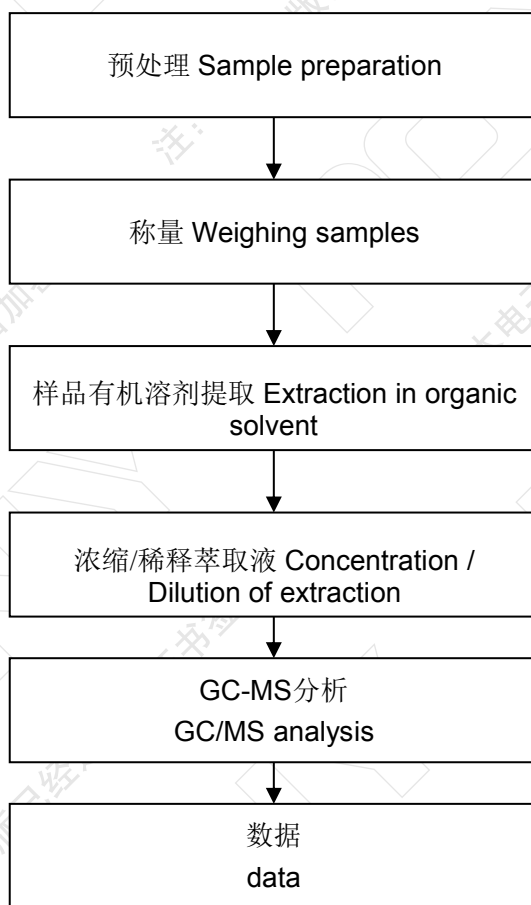
邻苯二甲酸酯类检测流程

Phthalate Flow Chart

检测人员: 周国春 Tested by: Zhou Guochun

审核人员: 李晓丽 Checked by: Li Xiaoli

实验室负责人: 李青 Person in charge of the lab: Li Qing



报告结束

End of Report



Pony Testing International Group

Hotline: 400-819-5688 www.ponytest.com

公司地址: 天津滨海新区华苑产业区 (环外) 海泰华科一路 15 号 5 幢 6、7、8、9 层

检测地址: 天津滨海新区华苑产业区 (环外) 海泰华科一路 15 号 5 幢 6、7、8、9 层

天津滨海新区华苑产业区 (环外) 海泰华科一路 15 号 2 幢 1 层

Beijing Lab: (010)83055000

Shanghai Lab: (021)64851999

Qingdao Lab: (0532)88706866

Shenzhen Lab: (0755)26050909

Tianjin Lab: (022)27360730

Zhouzhou Lab: (0512)62997900

Changchun Lab: (0431)85150908

Dalian Lab: (0411)87336618

Haerbin Lab: (0451)88104651

Zhengzhou Lab: (0371)69350670

Xinjiang Lab: (0991)6684186

Shijiazhuang Lab: (0311)85376660

Xian Lab: (029)89608785

Huhehaote Lab: (0471)3450025

Hangzhou Lab: (0571)87219096

Ningbo Lab: (0574)87736499

Wuhan Lab: (027)83997127

Hefei Lab: (0551)63843474

Guangzhou Lab: (020)89224310

Xiamen Lab: (0592)5568048

Chengdu Lab: (028)87702708